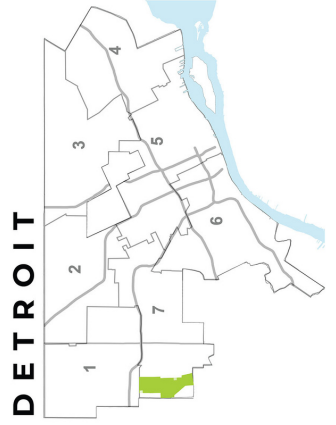


# ROUGE PARK



- KEY**
- River / wetland
  - Road
  - Bike path
  - Paved walking path
  - Nature trail (non-paved)
  - Trailhead



Design: Juliana Filton, General Services Dept., City of Detroit  
 Base map: Google Earth - Rouge Park, Detroit



## Park Events & Activities

### Nature Discovery

- Spring wildflower walks
- Summer butterfly & wildflower walks
- Fall color and tree identification walks

### Fitness

- Weekly Yoga classes June to Sept.
- Walking Club - year round
- Brennan Pools - summer (12-8pm)

### Winter Sports

- Sledding, Ice skating, X-C Skiing

### Camping

- The Detroit Inspiring Connections Outdoors provides training, gear rental, and programming for youth groups, scout troops, and school classes to have an overnight camping experience in Scout Hollow. [www.DetroitOutdoors.org](http://www.DetroitOutdoors.org) | (313) 618-8420 [DetroitScoutHollow@gmail.com](mailto:DetroitScoutHollow@gmail.com).

### Volunteer Opportunities

- Rouge Park Appreciation Day/Rouge Rescue (3rd Saturday in May)
- Tree plantings, trash clean-ups, natural areas restoration, trail maintenance

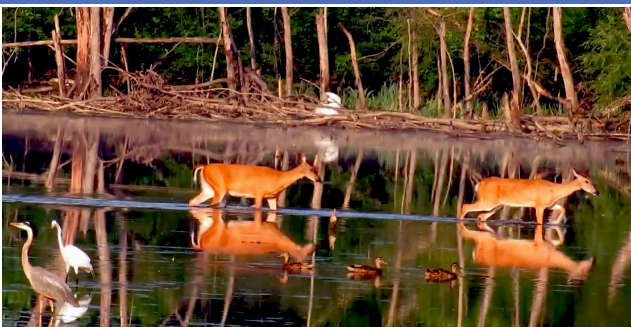
Visit [rougepark.org](http://rougepark.org) for a full list of upcoming events & activities

To reserve a picnic shelter or hold an event in Rouge Park, use the **Special Event Application** link at [www.rougepark.org](http://www.rougepark.org) or call the Recreation Division at 313-628-4203 or 313-269-4100

### City of Detroit Park Rules

1. Dogs must be on a leash. Pick up all dog waste.
2. No alcohol, drugs, or weapons.
3. No ATVs, snowmobiles, or dirtbikes on trails.
4. No littering.
5. No vending without permit.

For more info visit [www.detroitmi.gov/recreation/](http://www.detroitmi.gov/recreation/).



## Friends of Rouge Park

Friends of Rouge Park was founded in 2002 to protect, restore, and promote a natural, environmentally healthy, and culturally vibrant Rouge Park that engages the community for the benefit and enjoyment of all



### Member Organizations

The Greening of Detroit

Cody-Rouge Community Action Alliance  
National Kidney Foundation of Michigan

The Detroit Pistons · Buffalo Soldiers Heritage Association

Quicken Loans Community Fund · Detroit Aero Modelers

West Outer Drive Civic Association · Detroit Outdoors

Warrendale Community Association

Motor City Mountain Bike Association

Joy Community Association · Friends of the Rouge

Elite Archery, Inc. · Far West Detroit Civic Association

GM Dollars for Doers · Ally Financial Inc. Corporate Citizenship

The Wexner Foundation · Robert J. McClellan Attorney at Law

Boy Scouts--MI Crossroads Council

St. Suzanne Cody Rouge Community Resource Center

Brightmoor Concerned Citizens · Camp Casey

### Become a Member!

Membership dues start at only \$5/yr. Friends of Rouge Park holds quarterly membership meetings. All are welcome. Become a member at [rougepark.org/join](http://rougepark.org/join).

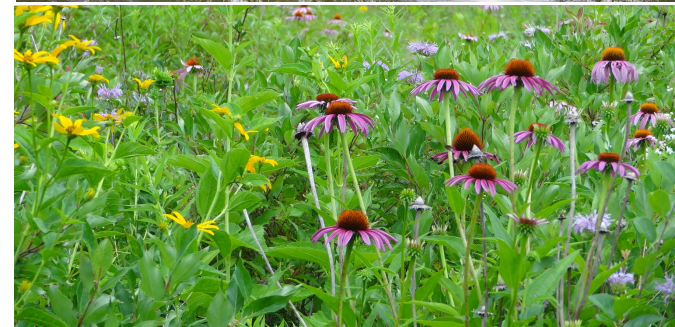


[rougepark@gmail.com](mailto:rougepark@gmail.com)  
[www.rougepark.org](http://www.rougepark.org)



GENERAL SERVICES DEPARTMENT  
Parks & Recreation  
Division

## Rouge Park Visitor Guide & Map



Established in 1925, Rouge Park is Michigan's largest urban park with 1,184 acres. Its four recreations areas, pools and golf course offer many opportunities for sports and leisure. With 4.6 miles of the Rouge River as its centerpiece, its natural areas offer many miles of hiking and mountainbiking trails winding through over 400 acres of forest, 60 acres of native prairie and a 5 acre marsh. Rouge Park is a great location for discovering nature, getting fit, swimming, playing sports, camping, picnicking or just relaxing!

### Park Hours

6:00 a.m. - 10:00 p.m.

## Park Attractions

4.7 MILES OF THE  
ROUGE RIVER

ONE BASEBALL DIAMOND

2 BASKETBALL  
COURTS



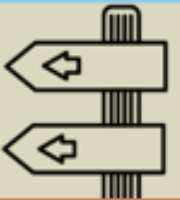
2 BRENNAN  
POOLS



FOUR RECREATION AREAS

ONE BANQUET HALL

3.5 MILES  
OF NATURE TRAILS



6.5 MILES  
OF PAVED TRAILS



2 MODEL  
AIRPLANE  
FIELDS



18 HOLE  
GOLF COURSE +  
DRIVING RANGE



ARCHERY  
RANGE



HORSE  
SHOES

6 PLAY  
GROUNDS

2 TENNIS  
COURTS



5 PICNIC  
SHELTERS



1,184  
ACRES  
DETROIT'S LARGEST PARK

SOCCER  
FIELDS



PONY RIDES



3 MILES  
OF MOUNTAIN  
BIKE TRAILS

